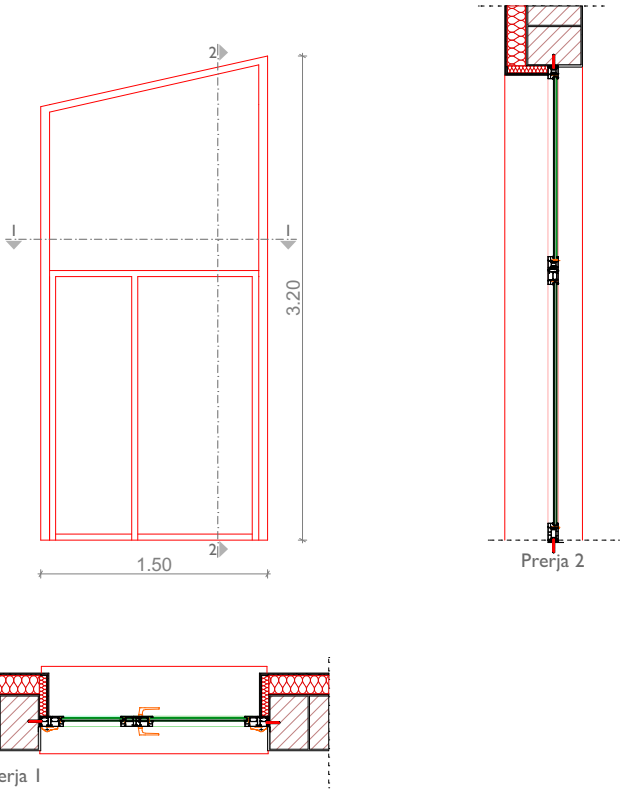


DYERT E JASHTME TË REJA

DUKJA





PLANI

Pos.21'

Specifikimi Teknik, Dimensionet, Standardet e kerkuara

Dimensionet: 150/ 320 cm	Ngjyra : Bardhe/ RAL 9003
Sasia : 1 copë	Standardet : DIN EN ISO 9001
Materiali : Alumin (Zjarrrdurese)	Qelqi 4(Katër Stinor)+16+4Low E
Korniza: Gjerësia≥85 mm	U-Value (dritare) : $U_w \leq 1.2 \text{ W/m}^2\text{K}$
Izolimi akustik : EN 14351, EN 717/ $R_w=42\text{dB}$	

Emri i Projektit: Consulting Company for Development of detailed energy audit reports, Detailed Designs, Technical Specification			Përpjesa 1:50	Nr.i vizatimit A.54	Vula
Financuar nga:  FONDI I KOSOVES PER EFICIENCEN E ENERGJES KOSOVO ENERGY EFFICIENCY FUND	Projekti Kryesor Arkitektura	Vizatuar nga: KK	Kontrolluar nga: Xh.G		
Projektuar nga:  PROJEKTIM MENAXHIM I PROJEKTIT KONSULTIME TEKNIKE DESIGN PROJECT MANAGEMENT TECHNICAL CONSULTING ALB-Architect Bregatë e Kallmetit Nr.3, Prishtinë, Tel: +383 65 553 553, info@alb-architect.com, www.alb-architect.com	Emri i objektit: SHMP "Naim Frasheri"	Vendi: Shtime	Data : Shkurt 2024		
	Titulli i vizatimit Skemat e Dyerve - 21'	Formati i fletës: A4	Nënshkrimi		